

**Bolt<sup>2</sup>**

**Bolt<sup>2</sup>**



## QUICK INSTALLATION GUIDE

## CONTENT INSPECTION

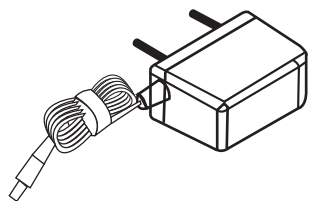
When you open the package, the package contains the following:



QIG



Bolt



Power Cable



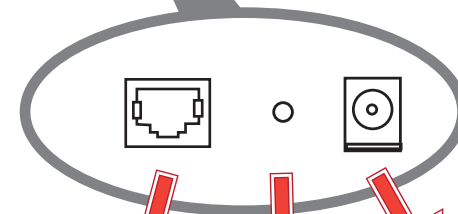
Ethernet cable

## GETTING TO KNOW YOUR



Side

Front



Ethernet  
Connector

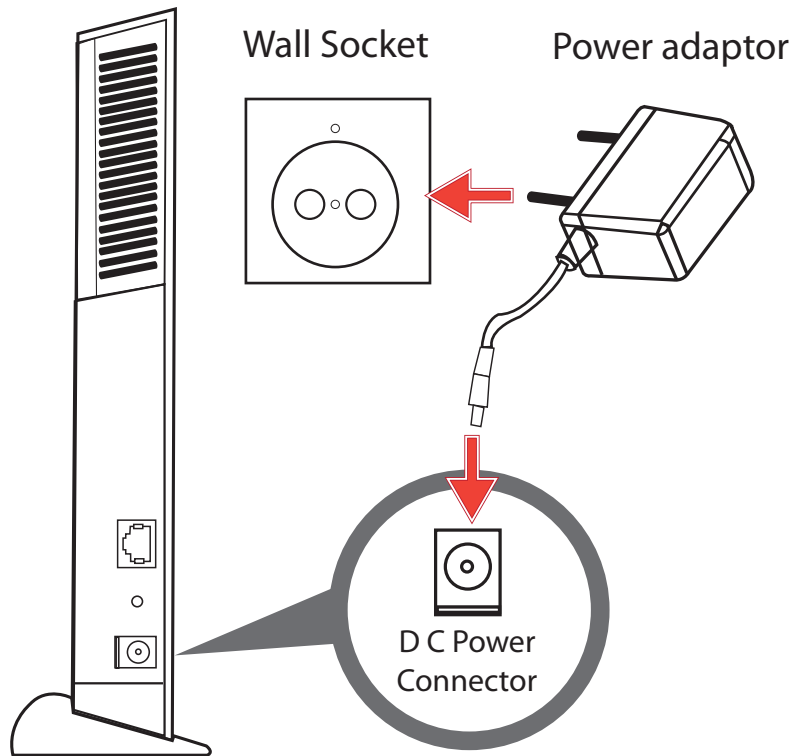
D C Power  
Connector

Reset  
Switch

## INSTALLATION PROCEDURE

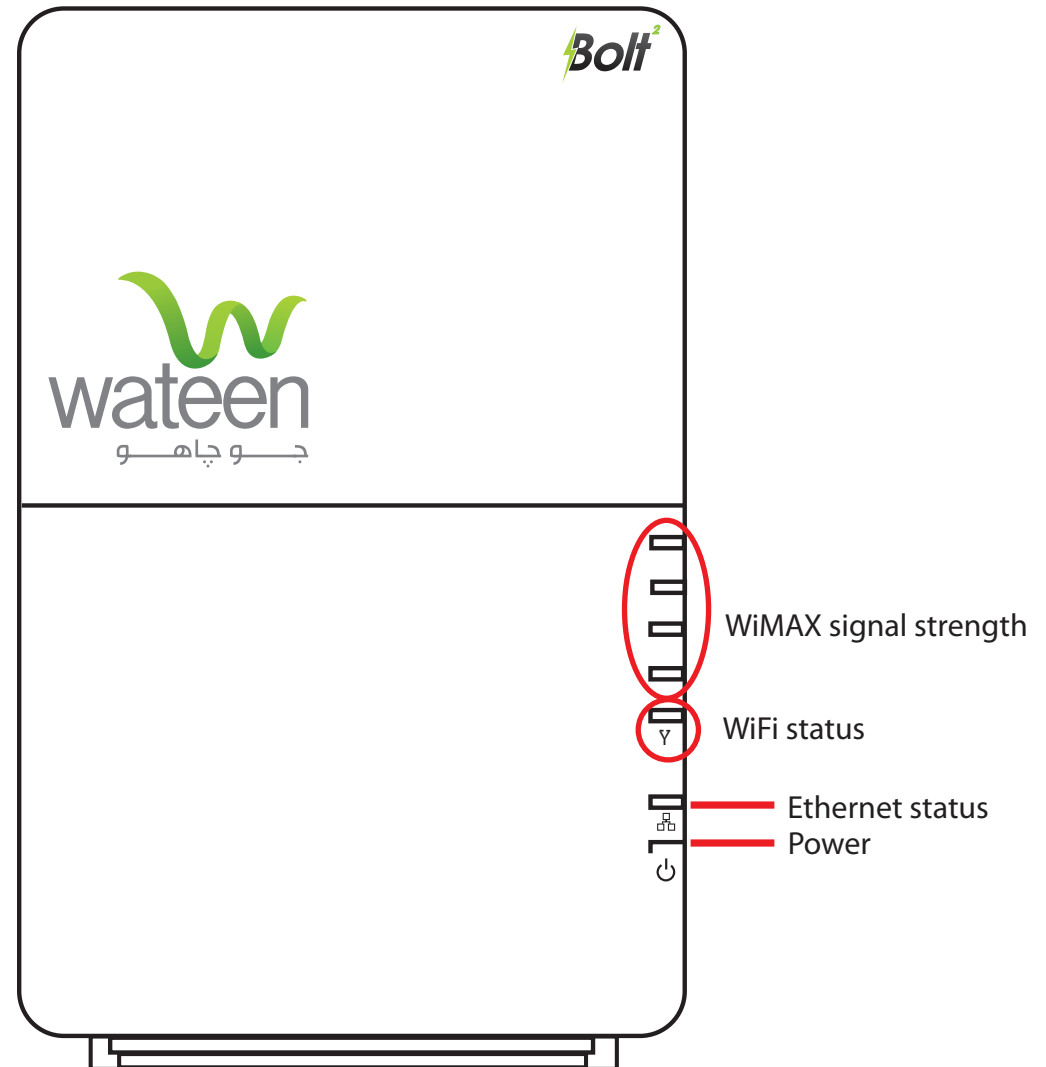
### Step 1: Power Up

Plug the power adaptor into the AC outlet and adaptor's DC pin into the DC power connector. The blue power LED will light when the power is turned on.



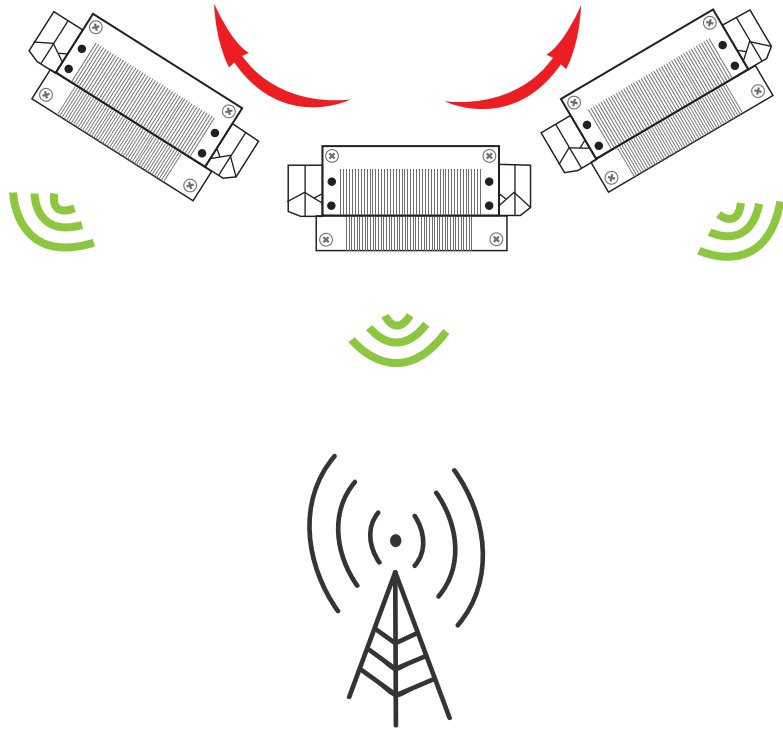
### Step 2: Establishing WiMAX Connection

When powered on, **Bolt** will connect to the Wateen WiMAX service by itself.



### Step 3: CPE Alignment

Position and adjust the direction of your **Bolt** to get maximum signal strength. For optimum results, it is recommended to place **Bolt** near a window.

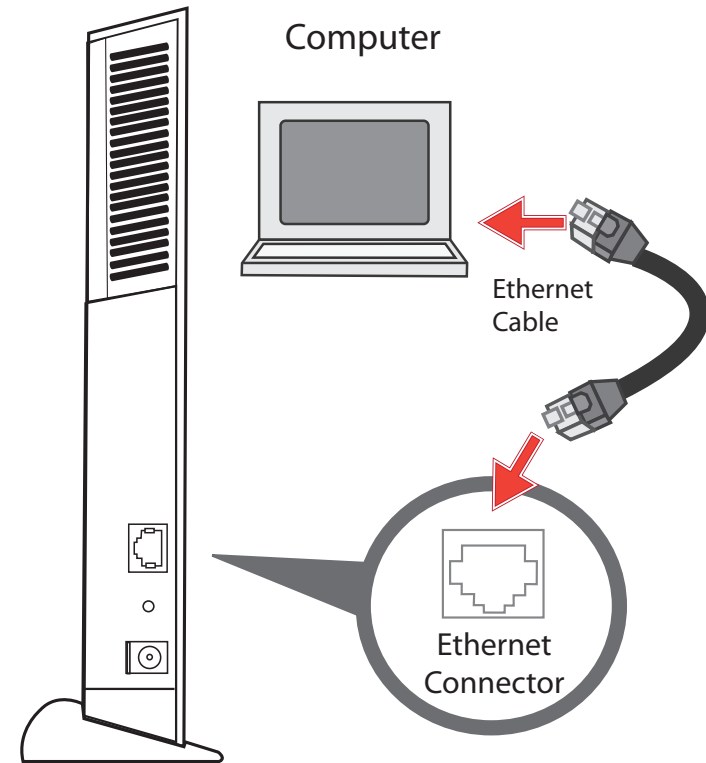


Wateen WiMAX Tower

### Step 4: Computer Connectivity

Using the Ethernet cable, connect one end to your computer and other to **Bolt**. Set your computer to obtain IP address automatically (using DHCP setting) according to your computer's operating system. The blue Ethernet status LED will light if the Ethernet cable is connected at both ends properly and securely.

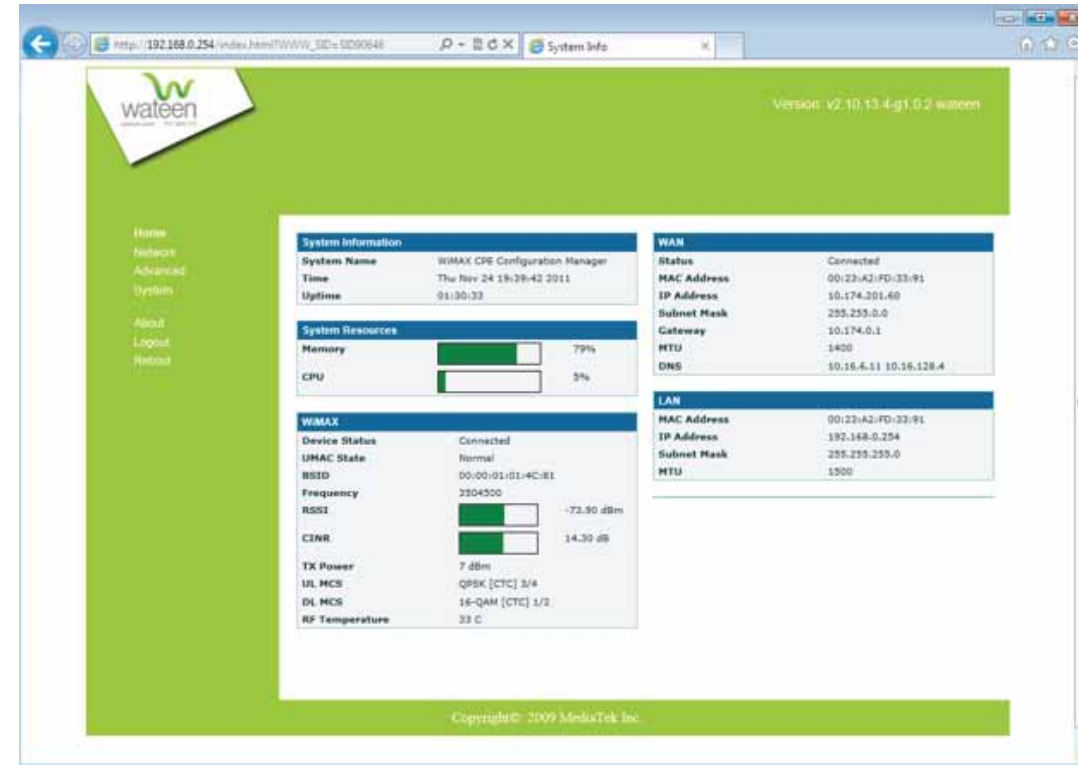
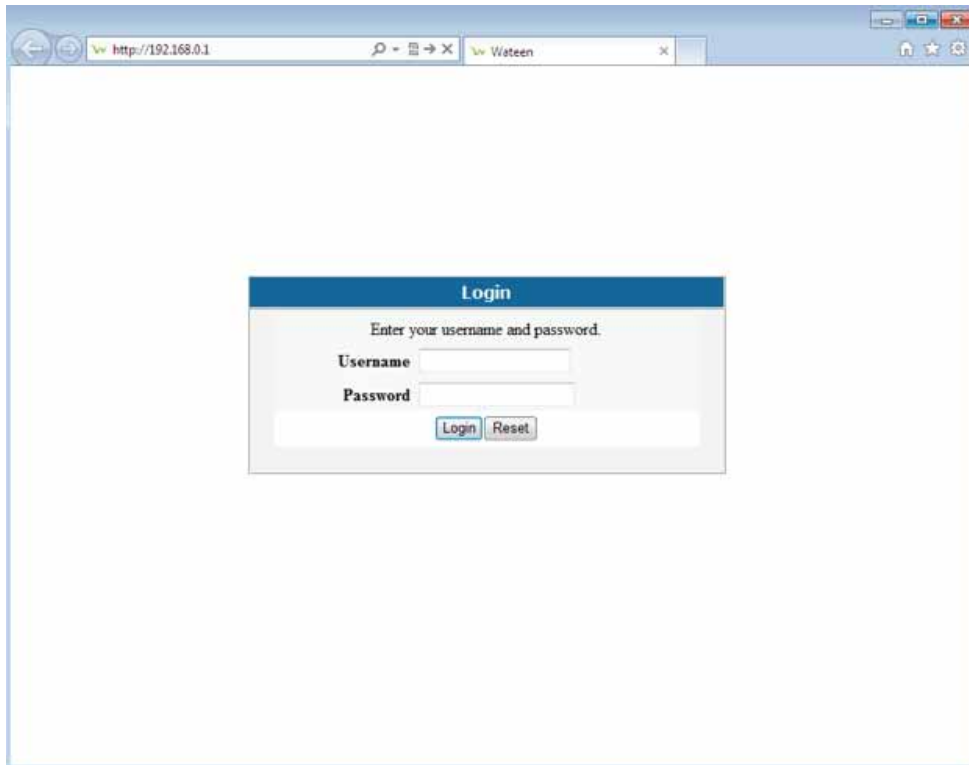
Note: Only power LED is blue. Where all other LEDs are green.



## Step 5: Connect to Web Interface

Wateen **Bolt** web interface makes user experience more than plug-and-play. To see the detailed connection information on WiMAX, LAN and WAN, please type <http://192.168.0.1> in the address bar as shown below to access the “Graphical User Interface”

Enter user name “user” and password “user”



## Tip

We would like to suggest to bookmark Wateen **Bolt** web interface (<http://192.168.0.1>) for easy access in future.

## Step 6: Software Upgrade

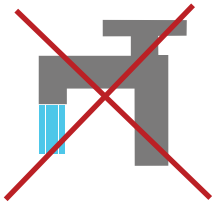
Wateen **Bolt** device will automatically detect if there is any software update release available. With this intelligent mechanism, your Wateen **Bolt** device will always have the latest software version without any manual intervention required.

## WARNING / INSTRUCTIONS

No Water



⊗ No Water



✔ Place close to window



✔ Keep space for airflow



✔ Indoor use only



## Correct disposal of this product



This marking on the product, accessories or literature indicates that the product and its electronic accessories should not be disposed off with other household waste at the end of their working life.

To prevent possible harm to the environment or human health from uncontrolled waste disposal, please separate these items from other types of waste and recycle them responsibly to promote the sustainable reuse of material resources.

Household users should contact either the retailer where they purchased this product, or their local government office, for details of where and how they can take these items for environmentally safe recycling.

Business users should contact their supplier and check the terms and conditions of the purchase contract. This product and its electronic accessories should not be mixed with other commercial wastes for disposal.